



**SCOTTISHPOWER
RENEWABLES**

East Anglia ONE North and East Anglia TWO Offshore Windfarms

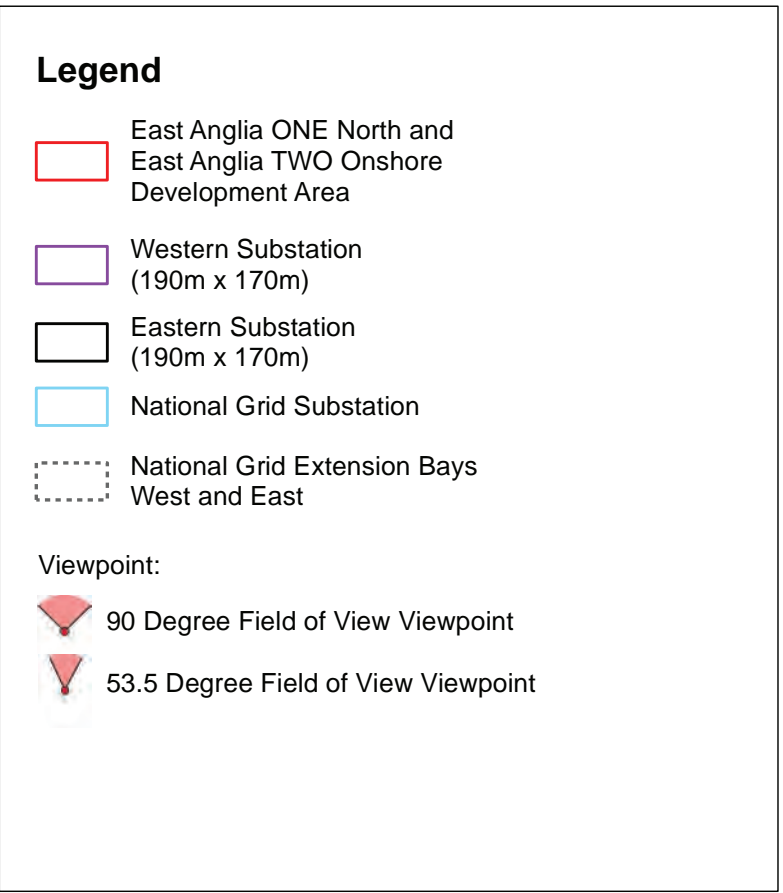
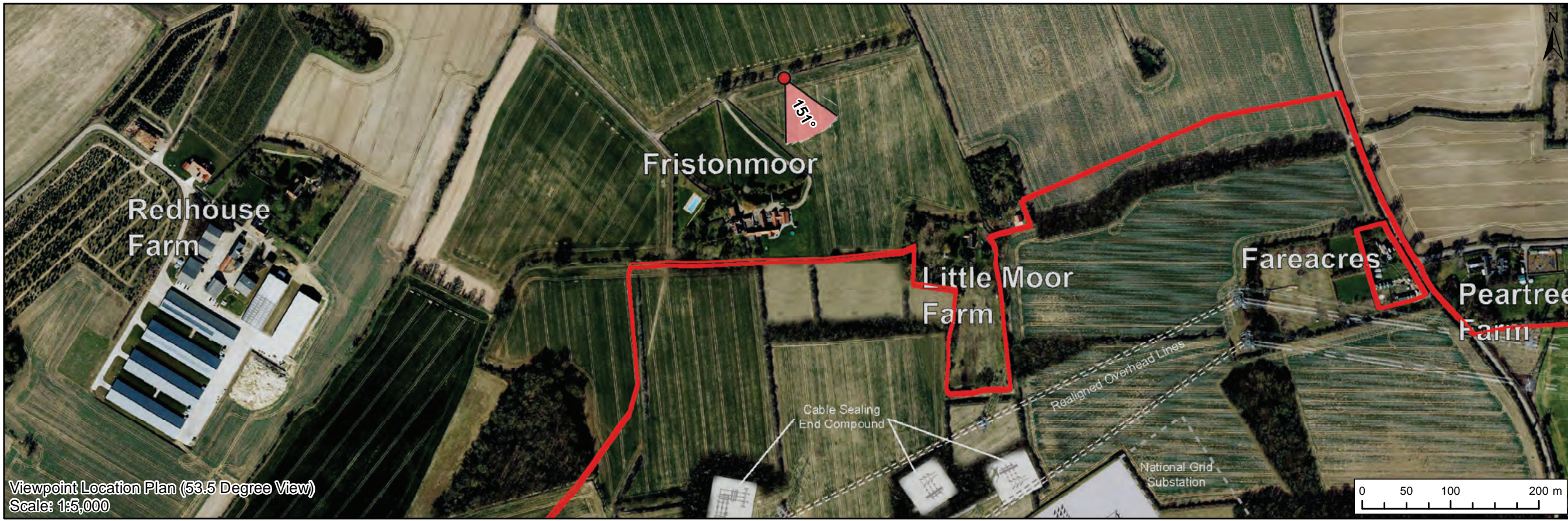
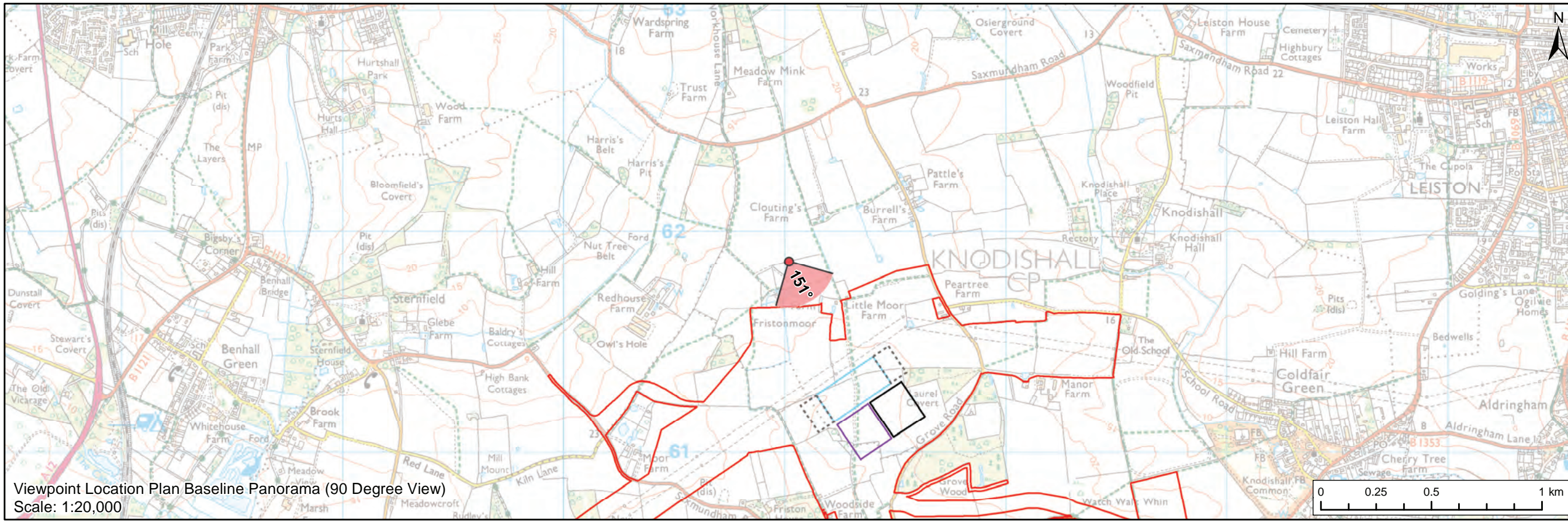
Viewpoint Photomontage with Potential National Grid Extension Bays:

**CHVP3 - PRoW between Moor Farm
and Little Moor Farm (Appendix 24.7,
Figure 8 - Update)**

Applicants: East Anglia ONE North Limited and East Anglia TWO Limited
Document Reference: ExA.AS-31.D8.V1_04
SPR Reference: EA1N_EA2-DWF-ENV-REP-IBR-001031_04

Date: 25th March 2021
Revision: Version 1
Author: ScottishPower Renewables

Applicable to East Anglia ONE North and East Anglia TWO



Prepared:	LA	Scale @ A3
Checked:	SM	
Approved:	LT	

Source: © Crown copyright and database right 2020. Ordnance Survey 100031972.
This map has been produced to the latest known information at the time of issue, and has been produced for your information only. Please consult with the SPN Onshore GIS team to ensure the content is still correct before using the information contained on this map. No liability is accepted for any errors or omissions in the information contained in the map and shall not be liable for any loss, damage or expense caused by such errors or omissions.

East Anglia ONE North and East Anglia TWO
CHVP3: PROW between Moor Farm and Little Moor Farm

(Appendix 24.7, Figure 8-Update)		
Rev	1	Coordinate System: BNG Datum: OSGB36
Date	13/01/21	
Figure	8a	



Baseline Photograph (53.5 Degree Field of View)

View that at a comfortable arm's length

OS reference: 641018 E 261864 N	Horizontal field of view: 53.5° (planar projection)	Camera: Canon EOS 5D Mark II
Eye level: 26 m AOD	Principal viewing distance: 812.5 mm	Lens: 50mm (Canon EF 50mm f/1.4)
Direction of view: 151°	Paper size: 841 x 297 mm (half A1)	Camera height: 1.5 m AGL
	Correct printed image size: 820 x 260 mm	Date and time: 22/02/2018, 13:35:32

Contains Ordnance Survey digital data © Crown copyright, All rights reserved 2020 Licence number 0100031673

Figure: 8b
CHVP3: PROW between Moor Farm and Little Moor Farm



Visual representation of 1st year of operational phase
 Photomontage of the proposed western substation, eastern substation, National Grid substation and National Grid extension bays west and east

View that at a comfortable arm's length

OS reference:	641018 E 261864 N	Horizontal field of view:	53.5° (planar projection)	Camera:	Canon EOS 5D Mark II
Eye level:	26 m AOD	Principal viewing distance:	812.5 mm	Lens:	50mm (Canon EF 50mm f/1.4)
Direction of view:	151°	Paper size:	841 x 297 mm (half A1)	Camera height:	1.5 m AGL
		Correct printed image size:	820 x 260 mm	Date and time:	22/02/2018, 13:35:32

Contains Ordnance Survey digital data © Crown copyright, All rights reserved 2020 Licence number 0100031673



Visual representation of 15th year of operational phase
 Photomontage of the proposed western substation, eastern substation, National Grid substation and National Grid extension bays west and east

View that at a comfortable arm's length

OS reference:	641018 E 261864 N	Horizontal field of view:	53.5° (planar projection)	Camera:	Canon EOS 5D Mark II
Eye level:	26 m AOD	Principal viewing distance:	812.5 mm	Lens:	50mm (Canon EF 50mm f/1.4)
Direction of view:	151°	Paper size:	841 x 297 mm (half A1)	Camera height:	1.5 m AGL
		Correct printed image size:	820 x 260 mm	Date and time:	22/02/2018, 13:35:32

Contains Ordnance Survey digital data © Crown copyright, All rights reserved 2020 Licence number 0100031673